

YE4&YE3 Series Low-voltage High Power Three Phase Asynchronous Motor

Frame Size 400~500

WOLONG
Power your future

Contents

01

Introduction _____ **03**

02

Product Overview _____ **03**

Product Description
Type Illustration
Technical Characteristics
Operating Conditions

03

Performance Data _____ **05**

YE4 Performance Data
YE3 Performance Data

04

Motor & Dimensions _____ **09**

B3 Motor and Dimensions
V1 Motor and Dimensions

05

Technical Information _____ **11**

Terminal box
Bearing
Vibration Value
Noise Value

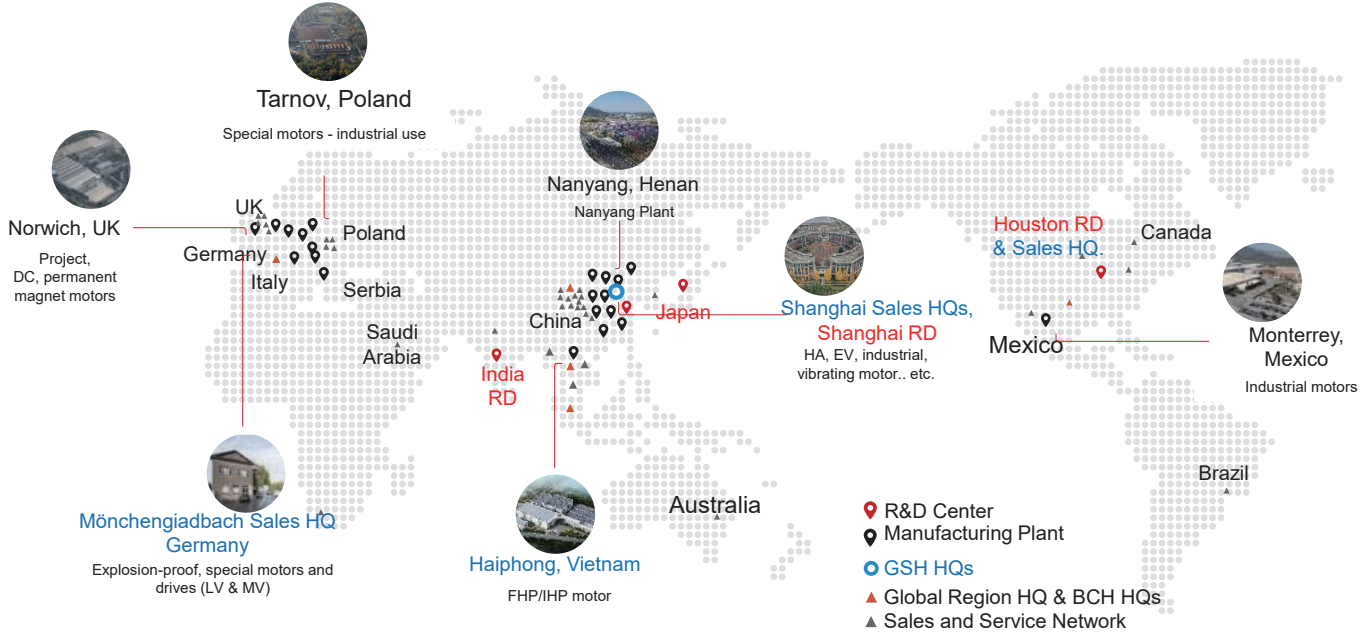
06

Ordering Guide _____ **13**

Introduction

Wolong, founded in 1984 and headquartered in Shaoxing, Zhejiang Province, is a global leading industrial enterprise committed to providing safe, efficient, intelligentized and green power drive system solutions with life-long supporting services to global users.

By utilizing cutting edge permanent magnet, nanotechnology and silicon carbide technologies, Wolong has built the China's first motor material demonstration platform, that satisfy the highest standards for power density and energy efficiency of motors and generators. With more than 30 years of development, the company has grown into one of the World's top three motor and drive manufacturers and sales enterprises. Wolong insists on technological innovation to lead the industrial reform, actively supports business digital transformation, continuously develops efficient drive system solutions and creates smart industry brain for the motor and drive life cycle management.



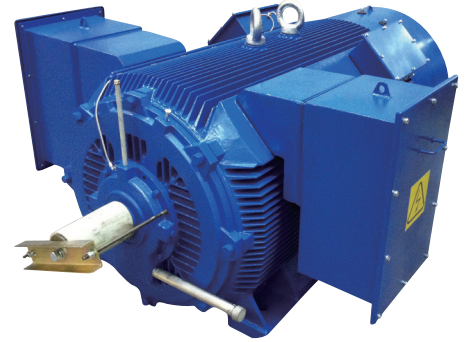
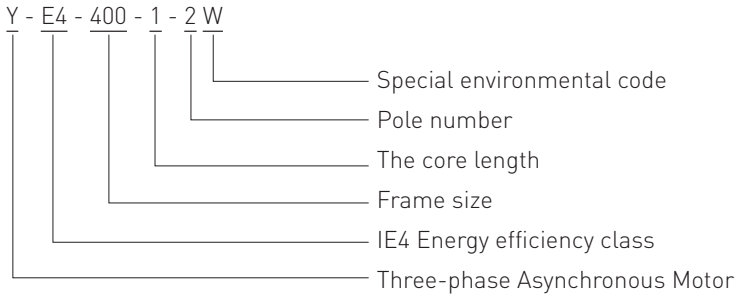
Product Description

Product Description

Low-voltage High Power Three-phase Asynchronous Motor is a high quality standard range of electric motors with a specification suitable for most industrial applications. The product efficiency meets GB 18613-2020 Level 2 to Level 3 energy efficiency standards, and also meets IEC60034-30-1 IE3 to IE4 grade, mounting dimensions conform to IEC standards, The installation size conforms to IEC standards and national standards, and also meets DIN42673 standards, which is conducive to the matching of export equipment and the spare parts of imported equipment. Motors are featured by beautiful appearance, high efficiency, low noise, low vibration, safety and reliability, and easy maintenance. Widely used in Petroleum, chemical, mining, metallurgy, electric power and other industries. It is an ideal driving equipment.



▼ Nomenclature



▼ Specification

Specification	Standard product	Options (special)
Frame size	400 ~ 500	-
Rated power	200 ~ 1400kW	-
Number of poles	2P~10P	-
Rated voltage	380/660V	660V/1140V etc.
Rated frequency	50Hz	-
Insulation class	180(H)	-
Temperature rise grade	80K	-
Efficiency level	IE4、IE3	-
Cooling mode	IC411	IC416
Mounting type	IMB3	IMV1
Enclosure	IP55	-
Duty	S1	-
Operating Environment	Indoor	W、WF1、WF2、F1、F2、TH、TA、THW、TAW

▼ Operating conditions

- Ambient temperature: -15°C to +40°C , Option -40°C to +60°C
- Altitude: No 1000 m
Note: Correction for deviations in field operating conditions As GB755 stipulations.
- Humidity: The monthly average maximum relative humidity should not exceed 90%.
※ The motor can be manufactured according to the customer's using environmental requirement.

YE4 Performance Data

2P、4P、6P Electricity Performance Data

Type	Rated Frequency(50Hz)							Locked Rotor Current Rated Current	Locked Rotor Torque Rated Torque	Maximum Torque Rated Torque	Moment of Inertia	Weight
	Power	Rated Current		Speed	Torque	Efficiency	Power Factor					
	kW	(380V)A	(660V)A	r/min	N.m	%	cosΦ				kg·m ²	kg
YE4-4001-2	355	622	358	2980	1138	96.5	0.9	8.6	0.9	2.2	7.2	3100
YE4-4002-2	400	701	403	2980	1282	96.5	0.9	8.6	0.9	2.2	7.2	3200
YE4-4003-2	450	788	454	2980	1442	96.5	0.9	8.6	0.8	2.2	9.0	3300
YE4-4004-2	500	876	504	2980	1602	96.5	0.9	8.6	0.8	2.2	9.0	3500
YE4-4005-2	560	970	559	2980	1795	96.5	0.91	8.7	0.8	2.2	12	3620
YE4-4006-2	630	-	628	2980	2019	96.5	0.91	8.7	0.8	2.2	12	3700
YE4-4501-2	710	-	708	2980	2275	96.5	0.91	8.0	0.6	2.2	17.4	3900
YE4-4502-2	800	-	798	2980	2564	96.5	0.91	8.0	0.6	2.2	22.3	4100
YE4-4503-2	900	-	898	2980	2884	96.5	0.91	8.0	0.6	2.2	23.9	4350
YE4-4001-4	355	635	365	1490	2275	96.7	0.88	8.5	0.9	2.2	16.2	3000
YE4-4002-4	400	715	412	1490	2564	96.7	0.88	8.5	0.9	2.2	18.1	3100
YE4-4003-4	450	804	463	1490	2884	96.7	0.88	8.5	0.8	2.2	20	3230
YE4-4004-4	500	894	515	1490	3205	96.7	0.88	8.5	0.8	2.2	25	3420
YE4-4005-4	560	990	570	1490	3589	96.7	0.89	8.6	0.8	2.2	25	3580
YE4-4006-4	630	-	641	1490	4038	96.7	0.89	8.6	0.8	2.2	16.7	3760
YE4-4501-4	710	-	723	1490	4551	96.7	0.89	7.8	0.6	2.2	42	4400
YE4-4502-4	800	-	805	1490	5128	96.7	0.9	7.9	0.6	2.2	49	4600
YE4-4503-4	900	-	906	1490	5769	96.7	0.9	7.9	0.6	2.2	49	4750
YE4-4504-4	1000	-	1006	1490	6409	96.7	0.9	7.9	0.6	2.2	49	4900
YE4-5001-4	1000	-	1006	1490	6409	96.7	0.9	7.9	0.6	2.2	44.7	5100
YE4-5002-4	1120	-	1127	1490	7179	96.7	0.9	7.9	0.6	2.2	49.5	5350
YE4-5003-4	1250	-	1258	1490	8012	96.7	0.9	7.9	0.6	2.2	54.5	5950
YE4-5004-4	1400	-	1409	1490	8973	96.7	0.9	7.9	0.6	2.2	62.2	6450
YE4-4001-6	280	538	310	990	2701	96.5	0.82	7.9	0.9	2.0	19.8	3000
YE4-4002-6	315	605	348	990	3039	96.6	0.82	7.9	0.9	2.0	22.7	3100
YE4-4003-6	355	682	393	990	3425	96.6	0.82	7.9	0.9	2.0	26.4	3200
YE4-4004-6	400	759	437	990	3859	96.6	0.83	8.0	0.9	2.0	33	3300
YE4-4005-6	450	854	492	990	4341	96.6	0.83	8.0	0.8	2.0	37	3400
YE4-4006-6	500	-	546	990	4823	96.6	0.83	8.0	0.8	2.0	37	3450
YE4-4501-6	560	-	604	990	5402	96.6	0.84	8.1	0.8	2.0	55	4300
YE4-4502-6	630	-	680	990	6077	96.6	0.84	8.1	0.8	2.0	62	4600
YE4-4503-6	710	-	766	990	6849	96.6	0.84	7.4	0.6	2.0	70	4750
YE4-5001-6	800	-	863	990	7717	96.6	0.84	7.4	0.6	2.0	88	6319
YE4-5002-6	900	-	971	990	8682	96.6	0.84	7.4	0.6	2.0	104	6454
YE4-5003-6	1000	-	1079	990	9647	96.6	0.84	7.4	0.6	2.0	110	6679

8P、10P Electricity Performance Data

Type	Rated Frequency(50Hz)							Locked Rotor Current Rated Current	Locked Rotor Torque Rated Torque	Maximum Torque Rated Torque	Moment of Inertia		Weight
	Power	Rated Current		Speed	Torque	Efficiency	Power Factor				kg·m ²	kg	
	kW	(380V)A	(660V)A	r/min	N.m	%	cosΦ						
YE4-4001-8	220	438	252	740	2839	95.4	0.8	7.6	1.1	2.0	31	3100	
YE4-4002-8	250	498	287	740	3226	95.4	0.8	7.6	1.1	2.0	31	3230	
YE4-4003-8	280	558	321	740	3614	95.4	0.8	7.6	0.9	2.0	33	3276	
YE4-4004-8	315	628	361	740	4065	95.4	0.8	7.6	0.9	2.0	36	3380	
YE4-4005-8	355	708	407	740	4581	95.4	0.8	7.6	0.9	2.0	41	3498	
YE4-4006-8	400	-	459	740	5162	95.4	0.8	7.6	0.9	2.0	50	3604	
YE4-4501-8	450	-	510	740	5807	95.4	0.81	7.8	0.8	2.0	57	4200	
YE4-4502-8	500	-	567	740	6453	95.4	0.81	7.8	0.8	2.0	67	4600	
YE4-4503-8	560	-	635	740	7227	95.4	0.81	7.8	0.8	2.0	67	5000	
YE4-5001-8	630	-	714	740	8130	95.4	0.81	7.8	0.8	2.0	76	6580	
YE4-5002-8	710	-	805	740	9163	95.4	0.81	7.8	0.6	2.0	88	6716	
YE4-5003-8	800	-	907	740	10324	95.4	0.81	7.8	0.6	2.0	104	6896	
YE4-5004-8	900	-	1020	740	11615	95.4	0.81	7.8	0.6	2.0	110	7100	
YE4-4001-10	200	413	237	595	3210	94.4	0.78	6.9	1.1	2.0	22.5	3030	
YE4-4002-10	220	454	261	595	3531	94.4	0.78	6.9	1.1	2.0	24	3100	
YE4-4003-10	250	517	297	595	4013	94.4	0.78	6.9	1.1	2.0	25.5	3210	
YE4-4004-10	280	579	333	595	4494	94.4	0.78	7.0	1.1	2.0	27.1	3420	
YE4-4005-10	315	650	374	595	5056	94.4	0.78	7.0	1.1	2.0	28.5	3760	
YE4-4006-10	355	732	422	595	5698	94.4	0.78	7.0	0.9	2.0	34.5	3920	
YE4-4501-10	355	732	422	595	5698	94.4	0.78	7.0	0.9	2.0	56.5	4800	
YE4-4502-10	400	-	476	595	6420	94.4	0.78	7.0	0.9	2.0	57.5	4900	
YE4-4503-10	450	-	535	595	7223	94.4	0.78	7.0	0.8	2.0	59.5	5050	
YE4-4504-10	500	-	595	595	8025	94.4	0.78	7.0	0.8	2.0	61.5	5150	
YE4-5001-10	500	-	595	595	8025	94.4	0.78	7.0	0.8	2.0	67.5	6790	
YE4-5002-10	560	-	665	595	8988	94.4	0.78	6.5	0.6	2.0	71	6920	
YE4-5003-10	630	-	749	595	10112	94.4	0.78	6.5	0.6	2.0	74	7100	
YE4-5004-10	710	-	844	595	11396	94.4	0.78	6.5	0.6	2.0	78.5	7300	

YE3 Performance Data

2P、4P、6P Electricity Performance Data

Type	Rated Frequency(50Hz)							Locked Rotor Current Rated Current	Locked Rotor Torque Rated Torque	Maximum Torque Rated Torque	Moment of Inertia		Weight
	Power	Rated Current		Speed	Torque	Efficiency	Power Factor				kg·m ²	kg	
	kW	(380V)A	(660V)A	r/min	N.m	%	cosΦ						
YE3-4001-2	355	619	357	2980	1138	95.8	0.91	8.6	0.9	2.2	5.7	3010	
YE3-4002-2	400	698	402	2980	1282	95.8	0.91	8.6	0.9	2.2	5.7	3110	
YE3-4003-2	450	785	452	2980	1442	95.8	0.91	8.6	0.8	2.2	7.5	3210	
YE3-4004-2	500	872	502	2980	1602	95.8	0.91	8.6	0.8	2.2	7.5	3410	
YE3-4005-2	560	977	563	2980	1795	95.8	0.91	8.7	0.8	2.2	10.5	3530	
YE3-4006-2	630	-	633	2980	2019	95.8	0.91	8.7	0.8	2.2	10.5	3610	
YE3-4501-2	710	-	713	2980	2275	95.8	0.91	8.0	0.6	2.2	15.9	3810	
YE3-4502-2	800	-	804	2980	2564	95.8	0.91	8.0	0.6	2.2	20.8	4010	
YE3-4503-2	900	-	904	2980	2884	95.8	0.91	8.0	0.6	2.2	22.4	4260	
YE3-4001-4	355	633	365	1490	2275	95.8	0.89	8.5	0.9	2.2	14.7	2910	
YE3-4002-4	400	714	411	1490	2564	95.8	0.89	8.5	0.9	2.2	16.6	3010	
YE3-4003-4	450	803	462	1490	2884	95.8	0.89	8.5	0.8	2.2	18.5	3140	
YE3-4004-4	500	892	514	1490	3205	95.8	0.89	8.5	0.8	2.2	23.5	3330	
YE3-4005-4	560	999	575	1490	3589	95.8	0.89	8.6	0.8	2.2	23.5	3490	
YE3-4006-4	630	-	647	1490	4038	95.8	0.89	8.6	0.8	2.2	15.2	3670	
YE3-4501-4	710	-	729	1490	4551	95.8	0.89	7.8	0.6	2.2	40.5	4310	
YE3-4502-4	800	-	822	1490	5128	95.8	0.89	7.9	0.6	2.2	47.5	4510	
YE3-4503-4	900	-	924	1490	5769	95.8	0.89	7.9	0.6	2.2	47.5	4660	
YE3-4504-4	1000	-	1027	1490	6409	95.8	0.89	7.9	0.6	2.2	47.5	4810	
YE3-5001-4	1000	-	1027	1490	6409	95.8	0.89	7.9	0.6	2.2	43.2	5010	
YE3-5002-4	1120	-	1150	1490	7179	95.8	0.89	7.9	0.6	2.2	48	5260	
YE3-5003-4	1250	-	1284	1490	8012	95.8	0.89	7.9	0.6	2.2	53	5860	
YE3-5004-4	1400	-	1438	1490	8973	95.8	0.89	7.9	0.6	2.2	60.7	6360	
YE3-4001-6	280	511	294	990	2701	95.8	0.87	7.9	0.9	1.8	18.3	2910	
YE3-4002-6	315	575	331	990	3039	95.8	0.87	7.9	0.9	1.8	21.2	3010	
YE3-4003-6	355	648	373	990	3425	95.8	0.87	7.9	0.9	1.8	24.9	3110	
YE3-4004-6	400	730	420	990	3859	95.8	0.87	8.0	0.9	1.8	31.5	3210	
YE3-4005-6	450	821	473	990	4341	95.8	0.87	8.0	0.8	1.8	35.5	3310	
YE3-4006-6	500	-	525	990	4823	95.8	0.87	8.0	0.8	1.8	35.5	3360	
YE3-4501-6	560	-	595	990	5402	95.8	0.86	8.1	0.8	1.8	53.5	4210	
YE3-4502-6	630	-	670	990	6077	95.8	0.86	8.1	0.8	1.8	60.5	4510	
YE3-4503-6	710	-	755	990	6849	95.8	0.86	7.4	0.6	1.8	68.5	4660	
YE3-5001-6	800	-	850	990	7717	95.8	0.86	7.4	0.6	1.8	86.5	6229	
YE3-5002-6	900	-	957	990	8682	95.8	0.86	7.4	0.6	1.8	102.5	6364	
YE3-5003-6	1000	-	1063	990	9647	95.8	0.86	7.4	0.6	1.8	108.5	6589	

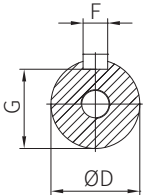
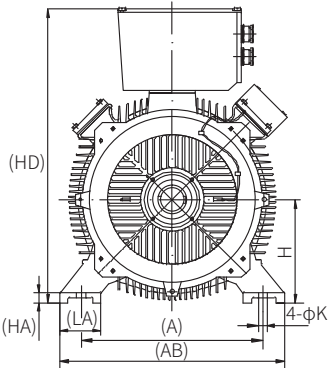
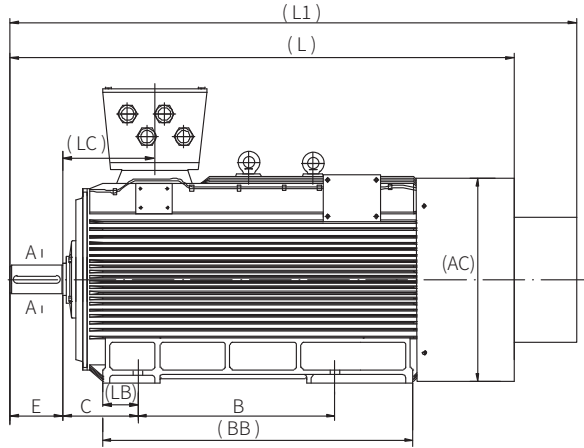
8P、10P Electricity Performance Data

Type	Rated Frequency(50Hz)							Locked Rotor Current Rated Current	Locked Rotor Torque Rated Torque	Maximum Torque Rated Torque	Moment of Inertia		Weight
	Power	Rated Current		Speed	Torque	Efficiency	Power Factor				kg·m ²	kg	
	kW	(380V)A	(660V)A	r/min	N.m	%	cosΦ						
YE3-4001-8	220	426	245	740	2839	94.6	0.83	7.6	1.1	1.8	29.5	3010	
YE3-4002-8	250	484	279	740	3226	94.6	0.83	7.6	1.1	1.8	29.5	3140	
YE3-4003-8	280	542	312	740	3614	94.6	0.83	7.6	0.9	1.8	31.5	3186	
YE3-4004-8	315	610	351	740	4065	94.6	0.83	7.6	0.9	1.8	34.5	3290	
YE3-4005-8	355	688	396	740	4581	94.6	0.83	7.6	0.9	1.8	39.5	3408	
YE3-4006-8	400	-	446	740	5162	94.6	0.83	7.6	0.9	1.8	48.5	3514	
YE3-4501-8	450	-	502	740	5807	94.6	0.83	7.8	0.8	1.8	55.5	4110	
YE3-4502-8	500	-	558	740	6453	94.6	0.83	7.8	0.8	1.8	65.5	4510	
YE3-4503-8	560	-	625	740	7227	94.6	0.83	7.8	0.8	1.8	65.5	4910	
YE3-5001-8	630	-	703	740	8130	94.6	0.83	7.8	0.8	1.8	74.5	6490	
YE3-5002-8	710	-	792	740	9163	94.6	0.83	7.8	0.6	1.8	86.5	6626	
YE3-5003-8	800	-	892	740	10324	94.6	0.83	7.8	0.6	1.8	102.5	6806	
YE3-5004-8	900	-	1004	740	11615	94.6	0.83	7.8	0.6	1.8	108.5	7010	
YE3-4001-10	200	416	239	595	3210	93.8	0.78	6.9	1.1	1.8	21	2940	
YE3-4002-10	220	457	263	595	3531	93.8	0.78	6.9	1.1	1.8	22.5	3010	
YE3-4003-10	250	520	299	595	4013	93.8	0.78	6.9	1.1	1.8	24	3120	
YE3-4004-10	280	582	335	595	4494	93.8	0.78	7.0	1.1	1.8	25.6	3330	
YE3-4005-10	315	655	377	595	5056	93.8	0.78	7.0	1.1	1.8	27	3670	
YE3-4006-10	355	738	425	595	5698	93.8	0.78	7.0	0.9	1.8	33	3830	
YE3-4501-10	355	738	425	595	5698	93.8	0.78	7.0	0.9	1.8	55	4710	
YE3-4502-10	400	-	479	595	6420	93.8	0.78	7.0	0.9	1.8	56	4810	
YE3-4503-10	450	-	539	595	7223	93.8	0.78	7.0	0.8	1.8	58	4960	
YE3-4504-10	500	-	599	595	8025	93.8	0.78	7.0	0.8	1.8	60	5060	
YE3-5001-10	500	-	599	595	8025	93.8	0.78	7.0	0.8	1.8	66	6700	
YE3-5002-10	560	-	670	595	8988	93.8	0.78	6.5	0.6	1.8	69.5	6830	
YE3-5003-10	630	-	754	595	10112	93.8	0.78	6.5	0.6	1.8	72.5	7010	
YE3-5004-10	710	-	850	595	11396	93.8	0.78	6.5	0.6	1.8	77	7210	

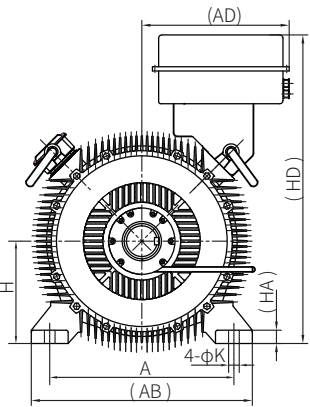
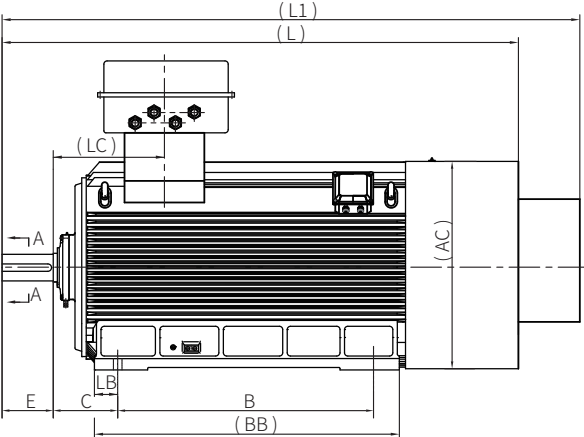
Motor Mounting & Dimensions

▼ (B3) Mounting type

IM B3
IM 1001
400~450



IM B3
IM 1001
500

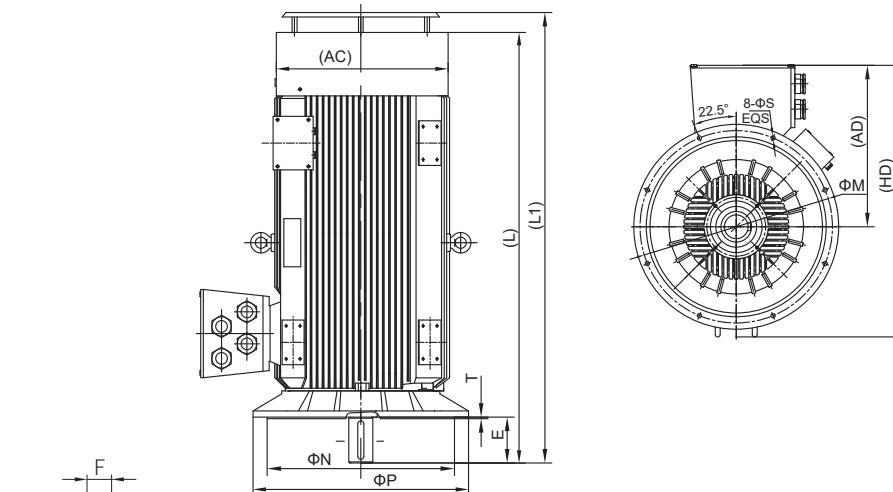


▼ B3 Motor mounting and outline dimensions

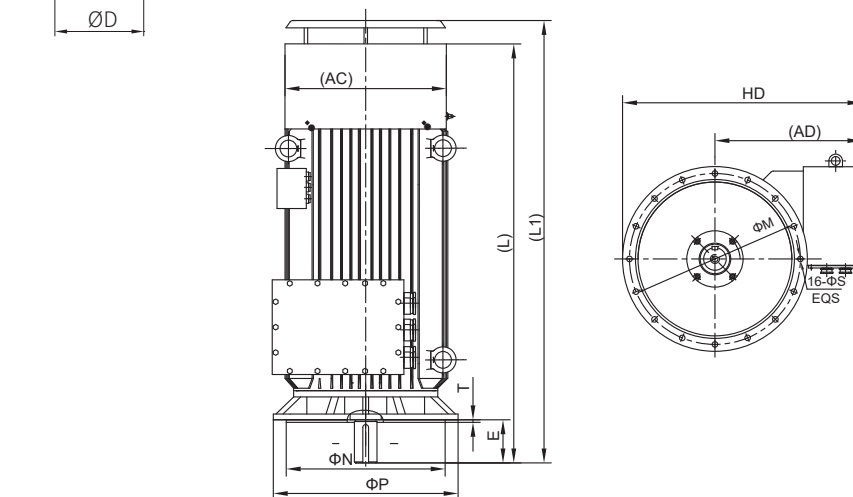
Frame size	Poles	Mounting dimensions (mm)									Outline dimensions (mm)												
		A	B	C	D	E	F	G	H	K	AB	BB	BD	BC	AC	AD	HD	LA	LB	LC	HA	L	L1
400	2	686	710	280	85	170	22	76	400	35	806	1090	140	210	860	900	1260	120	58	362	45	1910	2110
400	4~10	686	710	280	120	210	32	109	400	35	806	1090	140	210	860	900	1260	120	58	362	45	1975	2175
450	2	800	1000	250	95	170	25	86	450	42	990	1620	144	233	960	940	1380	190	93.5	430	52	2070	2270
450	4~10	800	1000	250	130	210	32	119	450	42	990	1620	144	233	960	940	1380	190	93.5	430	52	2110	2310
500	4~10	900	1250	315	140	250	36	128	500	42	1080	1490	160	221	1090	750	1550	180	102	553	65	2600	2800

▼ (V1) Mounting type

IM V1
IM 3011
400-450



IM V1
IM 3011
500



▼ V1 Motor mounting and outline dimensions

Frame size	Poles	Mounting dimensions (mm)									Outline dimensions (mm)				
		P	M	N	D	E	F	G	S	T	AC	AD	HD	L	L1
400	4-10	1000	940	880	120	210	32	109	28	6	860	900	1280	1975	2175
450	4-10	1150	1080	1000	130	210	32	119	28	6	960	940	1620	2110	2310
500	4-10	1400	1320	1250	140	250	36	128	28	8	1090	750	1750	2600	2800

Technical Information

Terminal Box

Main Terminal Box

The standard configuration of terminal box inlet wires is Gland inlet wires, or the armoured cable can be made as required (optional configuration).

Frame size	Gland specification (mm)	Armoured cable (optional configuration)	
		Outer diameter of inner sheath (mm)	Outer diameter of outer sheath (mm)
H400	3-M75X2	Φ54.5 ~ Φ68.2	Φ57.0 ~ Φ78.0
H450	4-M75X2		
H500	6-M75X2		

Auxiliary Terminal Box

The auxiliary terminal box refers to the temperature measuring terminal box and the heating belt terminal box, each has a separate inlet.

Frame size	Heated band		Terminal box	Gland (Allowable OD of cable) (mm)
	Rated voltage (V)	Rated power (W)		
H400	220	2*100	Independent terminal box	M20X1.5 (Φ12-Φ6)
H450	220	2*130	Independent terminal box	M20X1.5 (Φ12-Φ6)
H500	220	2*160	Independent terminal box	M20X1.5 (Φ12-Φ6)

Frame size	Temperature measuring method	Temperature measurer	No.	Terminal box	Gland (Allowable OD of cable) (mm)
H400-500	Motor winding temperature detection	PT100	6	Independent terminal box	M20X1.5 (Φ12-Φ6)
	Motor bearing temperature detection	PT100	One per bearing	Independent terminal box	

Temperature Set Range

Motor bearing: Alarm temperature 90°C, Stop temperature 95°C.

Motor winding: Alarm temperature 140°C, Stop temperature 145°C (PT100 measurer).

▼ Bearing

Bearing type and lubrication (IMB3)

Frame size	Poles	Bearing type		Grease filling level (g)	Lubrication cycle DE (h)
		DE	NDE		
400	2	6319/C3	6319/C3	45	1000
	4~10	6326	6326	82	2000
450	2	6220	6220	45	1000
	4~10	6328	6328	93	2000
500	4~10	NU230,6230	NU230	122/61	2000

Bearing type and lubrication (IMV1)

Frame size	Poles	Bearing type		Grease filling level (g)	Lubrication cycle DE (h)
		DE	NDE		
400	4~10	6326	7326	82	1600
450	4~10	6328	7328	93	1300
500	4~10	6330	7330	100	1000

Note: 1. The above data suitable for 50Hz, for 60Hz the interval time multiply 0.8;

2. If the operating temperature is exceed 70 ° C, the refueling cycle shall be halved for every 15 ° C increasing in temperature.

▼ Vibration Value

Mounting	Displacement (μm)	Vibration velocity(mm/s)	Acceleration (m/s ²)
Free suspended	45	2.8	4.4
Rigid mounting	37	2.3	3.6

Note: Grade "A" is applicable to motors with no special requirements on vibration. It is the default configuration.

▼ Noise

YE4 Noise lever

Power kW	Speed r/min				
	3000	1500	1000	750	600
	L _{WA} dB (A)				
200	-	-	-	91	91
220	-	-	-	91	91
250	-	-	-	91	91
280	-	-	92	91	91
315	-	-	92	91	91
355	97	93	92	91	91
400	97	93	92	91	93
450	97	93	92	93	93
500	97	93	92	93	93
560	97	93	95	93	95
630	97	95	95	95	95
710	97	95	95	95	95
800	97	95	99	95	-
900	97	95	99	95	-
1000	-	99	99	-	-
1120	-	99	99	-	-
1250	-	99	-	-	-
1400	-	99	-	-	-

YE3 Noise lever

Power kW	Speed r/min				
	3000	1500	1000	750	600
	L _{WA} dB (A)				
200	-	-	-	99	96
220	-	-	-	99	96
250	-	-	-	99	96
280	-	-	102	99	96
315	-	-	102	99	96
355	108	108	102	99	96
400	108	108	102	99	99
450	108	108	102	102	99
500	108	108	102	102	99
560	108	108	105	102	102
630	108	108	105	105	102
710	110	109	105	105	102
800	110	109	108	105	-
900	110	109	108	105	-
1000	-	111	108	-	-
1120	-	111	108	-	-
1250	-	111	-	-	-
1400	-	111	-	-	-

Ordering guide

▼ Motor selection table

- Voltage: 380 V 660 V Others.
- Frequency: 50 Hz Others.
- Mounting type: IMB3 IMV1 Others.
- Operating environment: Indoor Outdoor Ambient temperature Altitude Others.
- Protection grade: IP55 Others.
- Application mechanical characteristics and rotational inertia.
- Connection mode between the motor and application.
- Start mode, start frequency, start voltage drop, etc.
- Duty: S1 Others.
- Insulation grade: 180(H), Others.
- Rotation direction: Clockwise Counterclockwise Bothway .
- Terminal box position: Top Bight Left .
- Energy Efficiency class: IE4 IE3 Others.

▼ For Example

- Requirements: Frame size 400mm,355kW,2P,IE4,base with foot,end cover without flange,380/660V,50Hz,IC411,150(F) ,clockwise rotation,the Enter line with Grand . The motor marked as: YE4-4001-2 355kW 380/660V 50Hz IC411 IMB3 150(F) Grand.
- If you have any special requirements for voltage, frequency, protection grade, rotation direction, installation mode, dual-shaft extension, noise, vibration and terminal box connection, sign technology agreement before manufacturing.
- Note: For flange mounting motor, process approved mounting hole. If you need a round flange, please specify when ordering.

※ The catalogue data will be changed according improvement of technology without notice. Please pay attention the catalogue version alteration.

※ The right of final interpretation of this sample resides with Wolong Electric Group Co., Ltd.



WOLONG ELECTRIC GROUP CO.,LTD.

Add: No. 1801 West Renmin Road, Shangyu District, Shaoxing, Zhejiang, China

Web: www.wolong-electric.com